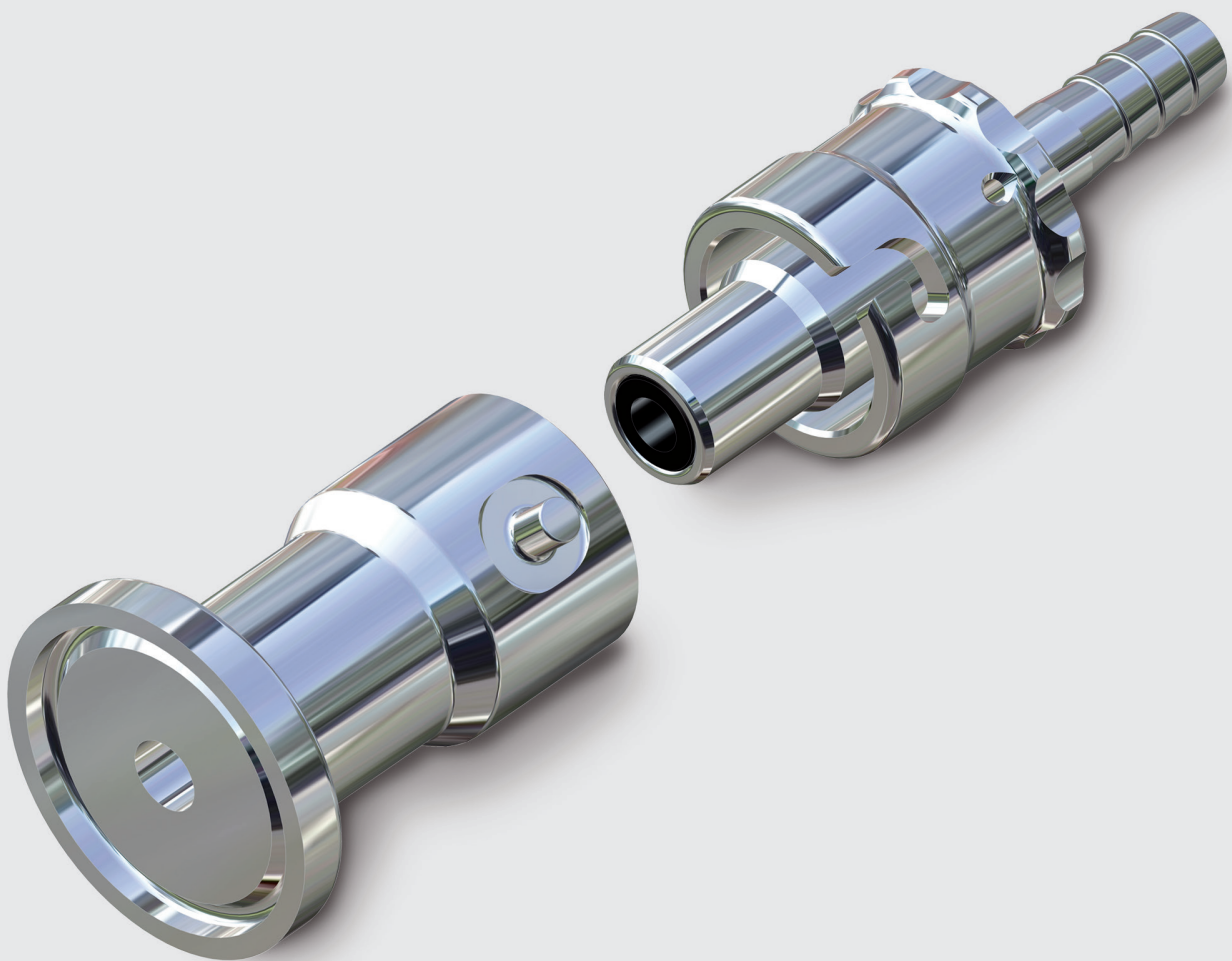


FAST MOVING TECHNOLOGY

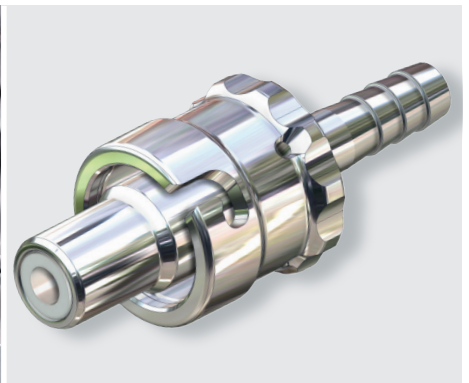
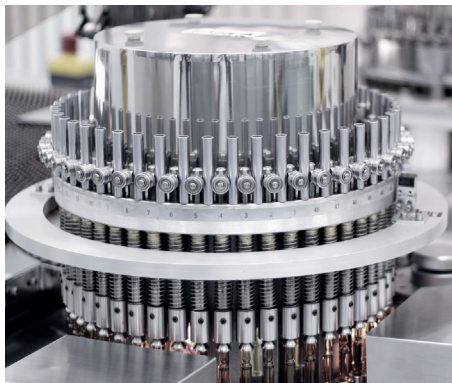
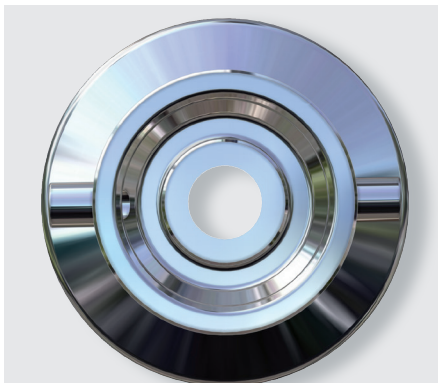
STÄUBLI

UPC Quick couplings

Connection with no retention zone in the flow line



Simple, robust, and high-quality connections



Applications

Loading, unloading, filling, draining and transfer of process fluids

Range

Two flow diameters: 5 mm and 15 mm.

Connection with no retention zone in the flow line

With its direct flow and no retention zones, the UPC connector can be cleaned or sterilised efficiently.

Safety

Bayonet locking system for safe and reliable connections.

Ergonomic

Semi-automatic: connection and disconnection are quick and effort-free, using one hand, significantly reducing the risk of RSI for operators.

Rapid seal replacement

Easy seal removal. Quick and easy seal replacement.

Certifications

The NF EN 10204 3.1 material certificate of compliance is available on request.

Easy connections

- Weld end
- ISO 2852 standard clamp profile

Compliance with FDA requirements

Quick connector designed to meet the requirements of the food and pharmaceutical industries.

Technical Characteristics

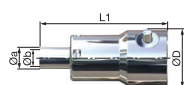
- Maximum allowable pressure: 10 bar
- Types of seal: USP class 6 silicone
- Construction: AISI 316L with Ra 0,6 in the fluid path.
- End connections:
 - socket: weld end or CLAMP profile
 - plug: hose connection

Please contact us for other end connections

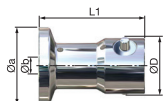
Part numbers

UPC 05

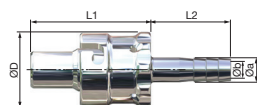
Description	Model	End connection	Dimensions (mm)					Part numbers	
			L1	L2	ØD	Øa	Øb		
Socket for welding tube 5 x 7	UPC 05	Ø 5/7 mm	41,5		24	7	5	N00634012	UPC05.1.../IC TUBE 5X7



Tri-clamp profile socket	UPC 05	Ø 25 mm	34,5		24	25	5	N00633912	UPC05.1025/IC
---------------------------------	---------------	---------	------	--	----	----	---	------------------	----------------------

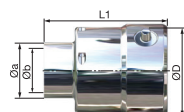


Plug for silicone hose	UPC 05	Ø 6 mm	39	26	25	8	5	N00634112	UPC05.6806/IC/JS/FDA/USP
-------------------------------	---------------	--------	----	----	----	---	---	------------------	---------------------------------

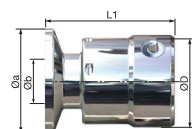


UPC 15

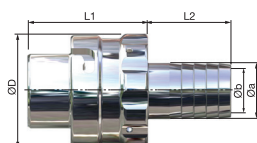
Description	Model	End connection	Dimensions (mm)					Part numbers	
			L1	L2	ØD	Øa	Øb		
Socket for welding tube 15 x 18	UPC 15	Ø 15/18 mm	40		36	18	15	N01219011	UPC15.1.../IC TUBE 15X18



Tri-clamp profile socket	UPC 15	Ø 34 mm	42		36	34	15	N01219111	UPC15.1034/IC
		Ø 50 mm	45		36	50	15	N01219211	UPC15.1050/IC



Plug for silicone hose	UPC 15	Ø 15 mm	39	27	37	18	15	100029939	UPC15.6815/IC/JS/FDA/USP
-------------------------------	---------------	---------	----	----	----	----	----	------------------	---------------------------------





● Stäubli units ○ Representatives / Agents

Stäubli group global presence

www.staubli.com